



Using Stabilized Aggregate To Build Segmental Retaining Walls

A cost-effective, nonconventional retaining wall option, building with stabilized aggregate offers unique solutions to difficult site problems without using geosynthetic reinforcement.

If there isn't enough space to construct a conventional retaining wall with geosynthetic reinforcement, stabilized aggregate can be an effective option. If poor in-fill soils are your challenge, using stabilized aggregate can reduce your construction costs.

Finally, excavating costs can be dramatically reduced. When building with geosynthetic reinforcement, the excavation depth behind the wall is typically 60 percent or more of the height of the wall. With stabilized aggregate, that drops to between 30 and 40 percent, depending on conditions.

This system is also an excellent alternative to rock removal and can compete favorably with big-block systems.

ABOUT STABILIZED AGGREGATE

IMPROVE PRODUCTIVITY

Walls built with stabilized aggregate in cut applications are often easier to build than conventional geosynthetic-reinforced walls.



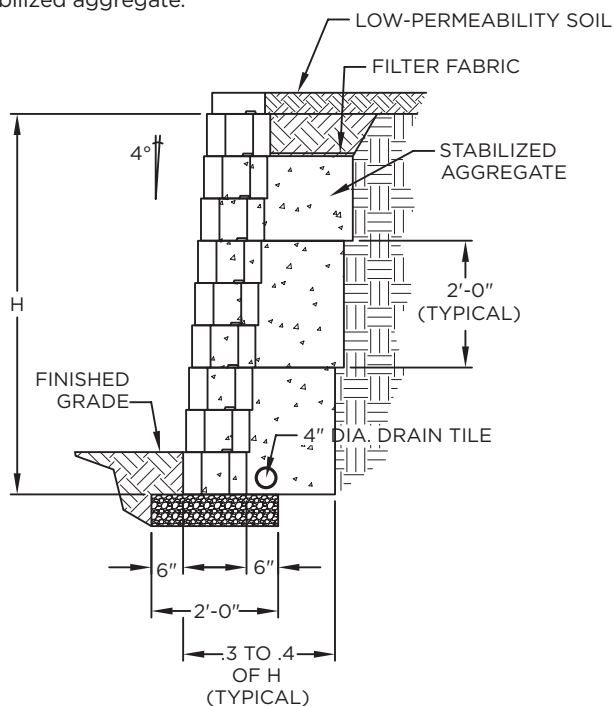
Excavation is reduced by about two-thirds and little or no soil return is required. The project can be built with smaller equipment, less manpower and better production rates than conventional structures.

Typically used with retaining walls greater than 3 feet high, stabilized aggregate structures have been built to heights in excess of 15 feet.

HOW STABILIZED AGGREGATE WORKS

Stabilized aggregate effectively increases the depth of the facing unit. This allows for taller gravity walls.

A proven system, over the past 10 years more than 10 million square feet of retaining walls have been built worldwide using stabilized aggregate.



STABILIZED AGGREGATE DEFINED

A formulated mix design of clean stone, cement and water that creates a permeable homogeneous zone (mass). It is obtained by the elimination of fine aggregates (sand) from the normal concrete mix.

MIX DESIGN FOR STABILIZED AGGREGATE

An approximate 6-to-1 or 7-to-1 ratio of stone to cement. Aggregate size can be 1/2 inch or 3/4 inch depending on the height of the structure. Use approximately 5 gallons of water for 100 pounds of cement. The design engineer will determine the specific mix.



This sample has the proper amount of water

RECOMMENDED ANCHOR™ PRODUCTS

The following Anchor™ products can be used with stabilized aggregate:

- Vertica® products
- Vertica Pro® products
- Diamond Pro Stone Cut™ products
- Diamond Pro® products
- Highland Stone® products
- Diamond Stone Cut™ products
- Diamond® products

SYSTEM SUPPORT

To learn more about this productivity-improving system and to download construction details, visit anchorwall.com, For Professionals section.

©2008 Anchor Wall Systems, Inc. (AWS). Vertica products, Vertica Pro products, Diamond Pro Stone Cut products, Diamond Pro products, Highland Stone products, Diamond products and Diamond Stone Cut products are manufactured under license from Anchor Wall Systems, Inc. Vertica products, Vertica Pro products, Diamond Pro Stone Cut products, Diamond Pro products, Highland Stone products, Diamond products and Diamond Stone Cut products are trademarks of Anchor Wall Systems. The retaining wall system blocks mentioned in this Installation Manual are covered by Anchor Wall Systems, Inc.'s Limited Warranty.

EW 820 09/08