



Installation Instructions

New Construction Installation Instructions

Preparations: All framing members must conform to present industry standards of 1 1/2" thick.

Brick veneer with a frame back-up wall is similar in construction to the frame wall in the following illustrations. (In masonry wall construction, size masonry wall so that rough opening is correct size after wood bucks have been installed. Fasten wood bucks to wall and nail to wood buck using procedures shown for frame wall construction.)

1. Preparing the Opening

1.1 Lay out window opening width between necessary to move existing stud or add a new one. Make the distance between regular studs equals the suggested rough opening width of the window, plus the thickness of two jack studs (**Figure 1**).

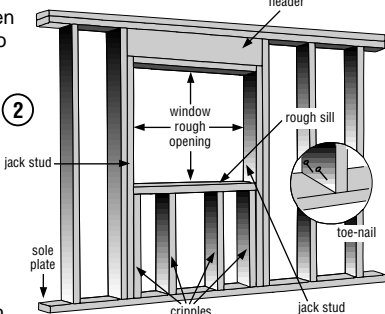
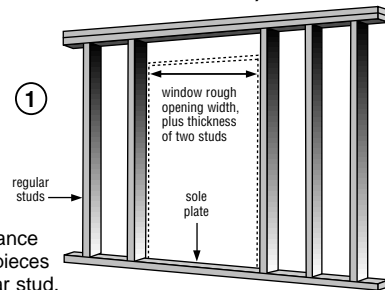
1.2 Cut two pieces of header material (2 x 8's, 2 x 12's, etc.) equal to the distance between the regular studs. Nail the two pieces together so header is as thick as regular stud.

1.3 In most house construction, the header should be 6' 10 1/2" from sub-floor, or follow local building code requirements. Position header between regular studs. Nail through the regular studs into each end of header to hold in place (**Figure 2**).

1.4 Cut jack studs to fit snugly between sole plate and header. Nail jack studs to regular studs. Toe-nail jack studs to header (**Figure 2**).

1.5 Cut rough sill and cripples from 2 by material. Distance between top of rough sill and header should equal window unit rough opening height. Nail side cripples to jack studs. Place rough sill on side cripples and nail. Place center cripples and nail through rough sill into end of cripples. Toe-nail cripples to sole plate (**Figure 2**).

1.6 Apply exterior sheathing flush with rough sill, header, and jack stud framing members.



2. Installing the Pittsburgh Corning LightWise® Window

2.1 Set window in rough opening from outside with nailing fin overlapping exterior sheathing. Provide a continuous bead of sealant between the nailing fin and exterior sheathing. Press the fin into the sealant before nailing. Center window within rough opening. Partially secure one corner with a 1 3/4" long roofing nail driven through pre-drilled nailing fin.

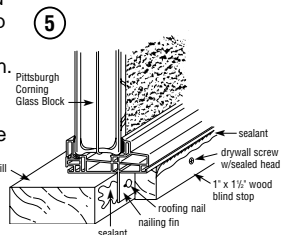
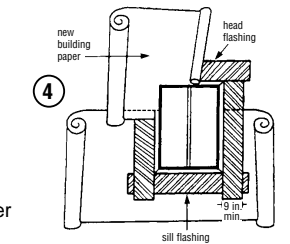
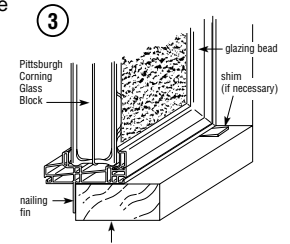
2.2 Level window by shimming under side jambs at sill if necessary. Then nail through opposite corner of nailing fin (**Figure 3**).

2.3 Plumb side jamb of window. Be sure to check both side-to-side and front-to-back. Shim if necessary. Always use pre-drilled holes for nailing. Secure window with 1 3/4" long roofing nails 3" to 6" from each corner and no more than 9" on center in between.

2.4 Install 9 inch flashing strips over the nailing fins as shown in **Figure 4**. Apply underlayment (such as building paper) in a shingled (overlapping) pattern.

2.5 In areas where the design windload is over 55 psf, the nailing fin must be additionally secured with a 1" x 1 1/2" wood blind stop around the entire perimeter (**Figure 5**). Secure blind stop with #8 x 2" long drywall screws 3" from each corner and no more than 8" on center in between.

2.6 After exterior siding or brick is applied, caulk around perimeter of window unit. (When brick veneer is used as exterior finish, adequate clearance must be left for caulking between window sill and masonry. This will prevent damage and bowing of sill caused by shrinkage and setting of structural lumber.)



*Nominal Glass Block Panel Size	Required Rough Opening Size (width x height)	*Nominal Glass Block Panel Size	Required Rough Opening Size (width x height)	*Nominal Glass Block Panel Size	Required Rough Opening Size (width x height)
8" x 16"	9 13/16" x 17 5/16"	24" x 64"	25 3/16" x 64 5/16"	48" x 40"	48 3/16" x 40 15/16"
8" x 24"	9 13/16" x 25 3/8"	24" x 72"	25 3/8" x 72 1/8"	48" x 48"	48 3/8" x 48 3/8"
8" x 32"	9 13/16" x 33 1/16"	24" x 80"	25 3/8" x 79 7/8"	48" x 56"	48 3/8" x 56 3/16"
8" x 40"	9 13/16" x 40 15/16"	32" x 8"	33 3/16" x 9 13/16"	48" x 64"***	48 3/16" x 64 5/16"
8" x 48"	9 13/16" x 48 3/4"	32" x 16"	33 3/16" x 17 5/16"	56" x 8"	56 9/16" x 9 13/16"
8" x 56"	9 13/16" x 56 9/16"	32" x 24"	33 3/16" x 25 3/8"	56" x 16"	56 9/16" x 17 5/8"
8" x 64"	9 13/16" x 64 1/16"	32" x 32"	33 3/16" x 33 3/16"	56" x 24"	56 9/16" x 25 3/8"
8" x 72"	9 13/16" x 72 1/16"	32" x 40"	33 3/16" x 40 15/16"	56" x 32"	56 9/16" x 33 3/16"
8" x 80"	9 13/16" x 79 7/16"	32" x 48"	33 3/16" x 48 3/16"	56" x 40"	56 9/16" x 40 15/16"
16" x 8"	17 5/16" x 9 13/16"	32" x 56"	33 3/16" x 56 9/16"	56" x 48"	56 9/16" x 48 3/16"
16" x 16"	17 5/16" x 17 5/8"	32" x 64"	33 3/16" x 64 5/16"	56" x 56"	56 9/16" x 56 9/16"
16" x 24"	17 5/16" x 25 3/16"	32" x 72"	33 3/16" x 72 1/16"	64" x 8"	64 5/16" x 9 13/16"
16" x 32"	17 5/16" x 33 3/16"	32" x 80"	33 3/16" x 79 7/16"	64" x 16"	64 5/16" x 17 5/16"
16" x 40"	17 5/16" x 40 15/16"	40" x 8"	40 15/16" x 9 13/16"	64" x 24"	64 5/16" x 25 3/8"
16" x 48"	17 5/16" x 48 3/4"	40" x 16"	40 15/16" x 17 5/8"	64" x 32"	64 5/16" x 33 3/16"
16" x 56"	17 5/16" x 56 9/16"	40" x 24"	40 15/16" x 25 3/16"	64" x 40"***	64 5/16" x 40 15/16"
16" x 64"	17 5/16" x 64 1/16"	40" x 32"	40 15/16" x 33 3/16"	64" x 48"***	64 5/16" x 48 3/16"
16" x 72"	17 5/16" x 72 1/16"	40" x 40"	40 15/16" x 40 15/16"	72" x 8"	72 1/16" x 9 13/16"
16" x 80"	17 5/16" x 79 7/16"	40" x 48"	40 15/16" x 48 3/4"	72" x 16"	72 1/16" x 17 5/8"
24" x 8"	25 3/16" x 9 13/16"	40" x 56"	40 15/16" x 56 9/16"	72" x 24"	72 1/16" x 25 3/8"
24" x 16"	25 3/16" x 17 5/16"	40" x 64"***	40 15/16" x 64 5/16"	72" x 32"	72 1/16" x 33 3/16"
24" x 24"	25 3/16" x 25 3/16"	40" x 72"***	40 15/16" x 72 1/16"	72" x 40"***	72 1/16" x 40 15/16"
24" x 32"	25 3/16" x 33 3/16"	48" x 8"	48 3/16" x 9 13/16"	80" x 8"	79 1/16" x 9 13/16"
24" x 40"	25 3/16" x 40 15/16"	48" x 16"	48 3/16" x 17 5/16"	80" x 16"	79 1/16" x 17 5/16"
24" x 48"	25 3/16" x 48 3/16"	48" x 24"	48 3/16" x 25 3/16"	80" x 24"	79 1/16" x 25 3/8"
24" x 56"	25 3/16" x 56 9/16"	48" x 32"	48 3/16" x 33 3/16"	80" x 32"	79 1/16" x 33 3/16"

*Note: Based on 8" x 8" nominal glass block. **AAMA test results do not pertain to these size windows.



National Fenestration Rating Council

CERTIFIED

Pittsburgh Corning Corporation

LightWise® Windows-Fixed Vinyl Frame

ENERGY Performance

- Energy savings will depend on your specific climate, house and lifestyle
- For more information, call 800-624-2120 or visit NFRC's web site at www.nfrc.org

Technical Information

Res U-Factor .52

Manufacturer stipulates that these ratings conform to applicable NFRC procedures for determining whole product energy performance. NFRC ratings are determined for a fixed set of environmental conditions and specific product sizes.

This fenestration product has been certified by the manufacturer to meet the air infiltration requirements of Section 116(a)1., 1992 California Energy Standards.

Renovation Installation Instructions

1. Certain renovation installations will require that the existing window opening be reduced in size to accommodate one of the rough opening window sizes noted in sizing chart. This is accomplished by fastening wood bucks inside the existing opening. **See Figure 2 above.**
2. If the wood bucks are at least 1½" thick, the LightWise® window may be installed by screwing through the vinyl frame's integral nailing fin.
3. On some renovation installations, the integral nailing fin may have to be removed to insert the LightWise® window into the existing opening. Score the fin with a razor knife and snap it off.

3.1 Remove the glazing beads by prying them out carefully to avoid damage to the frame and glass.

3.2 Insert the window into the rough opening from the inside of the room. Shim and level vinyl frame as necessary.

3.3 The vinyl frame will be secured with screws through the glazing bead slot.

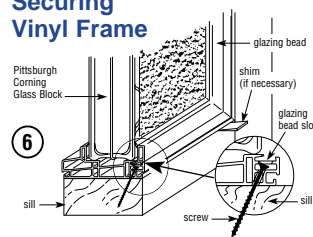
See Figure 6. Drill pilot holes on an angle through the frame as illustrated. Drill holes for screws 6" from each corner and no more than 12" on center in between.

3.4 Secure the vinyl frame in the rough opening using #8 x 2½" long galvanized screws.

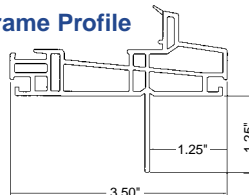
3.5 After all screws are in place, reinstall the glazing bead, fitting each length carefully and securely into the glazing bead slot.

Pay particular attention at the premitered corners to assure a neat, professional fit.

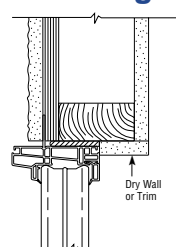
Securing Vinyl Frame



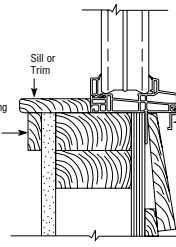
Frame Profile



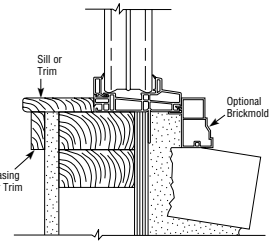
Finishing and Accessories



Head or Jamb Detail



Sill Detail w/Optional J-Channel



Sill Detail w/Optional Brickmold

INSTALLATION & CLEANING RECOMMENDATIONS

- LightWise® Windows should not be used in showers or other areas where the interior side of the window may come in direct water contact.
- Use a detergent-water solution and soft rag or brush to remove dust, dirt, smoke film, soot or salt spray from vinyl frame surfaces.
- For glass surfaces, follow common window-cleaning procedures using warm soapy water or a branded glass cleaning product.
- Protect LightWise® Windows from power washing and acid cleaning of surrounding walls.



800 Presque Isle Drive
Pittsburgh, PA 15239
724/327-6100

www.pittsburghcorning.com

LightWise® logo is a registered trademark owned and protected by Pittsburgh Corning Corporation, Pittsburgh, PA 15239
©2002 Pittsburgh Corning Corporation

Printed in U.S.A.

2/02